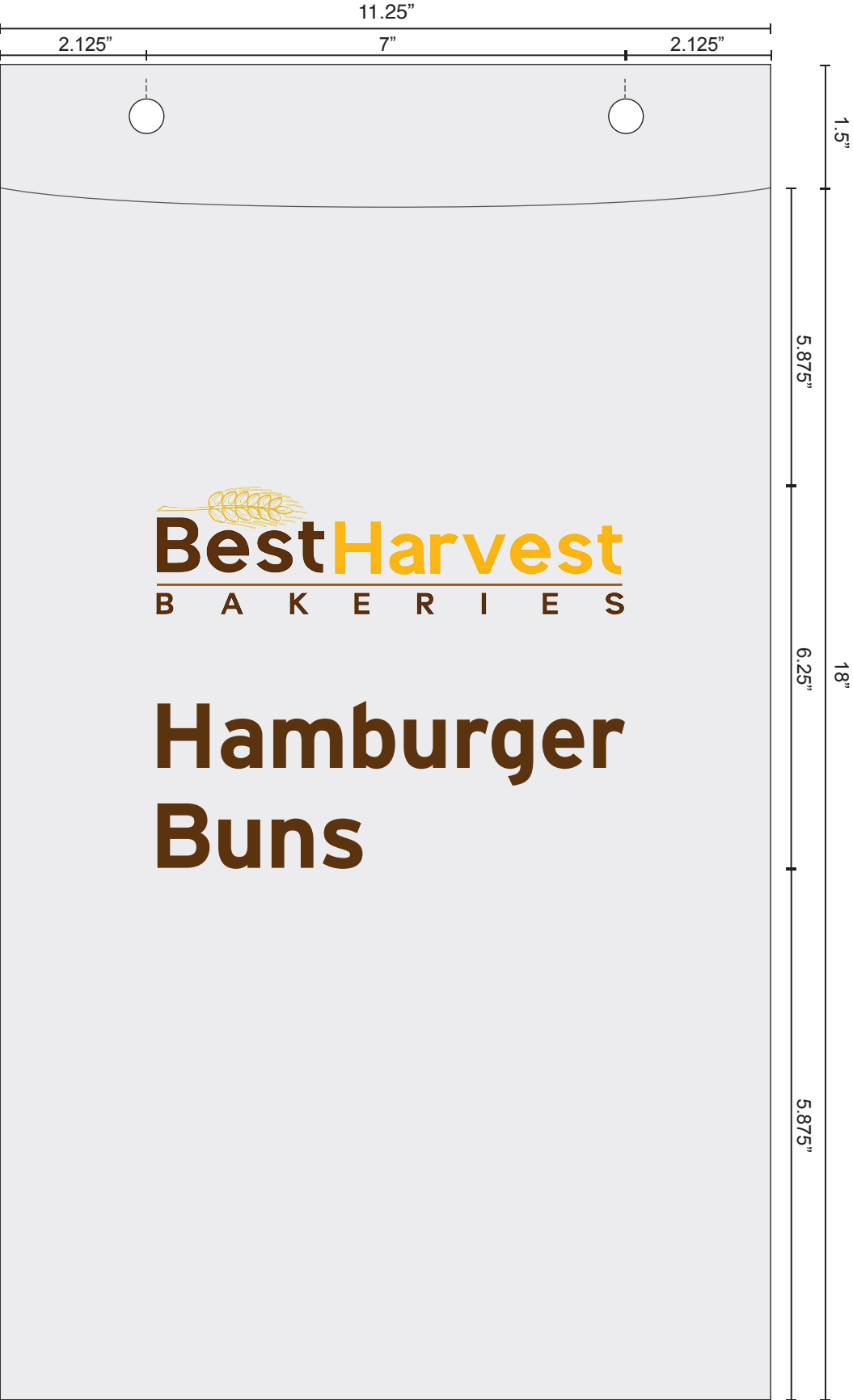
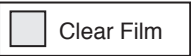


Technical Drawing - MOD7565

11.25" x 18" with 4" BG 2mil Wicketed Bag  
Registered Print; image size: 6.5" x 5.3"  
Film color: Clear; number of ink colors: 3

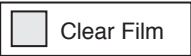
This scaled drawing serves as your print proof.



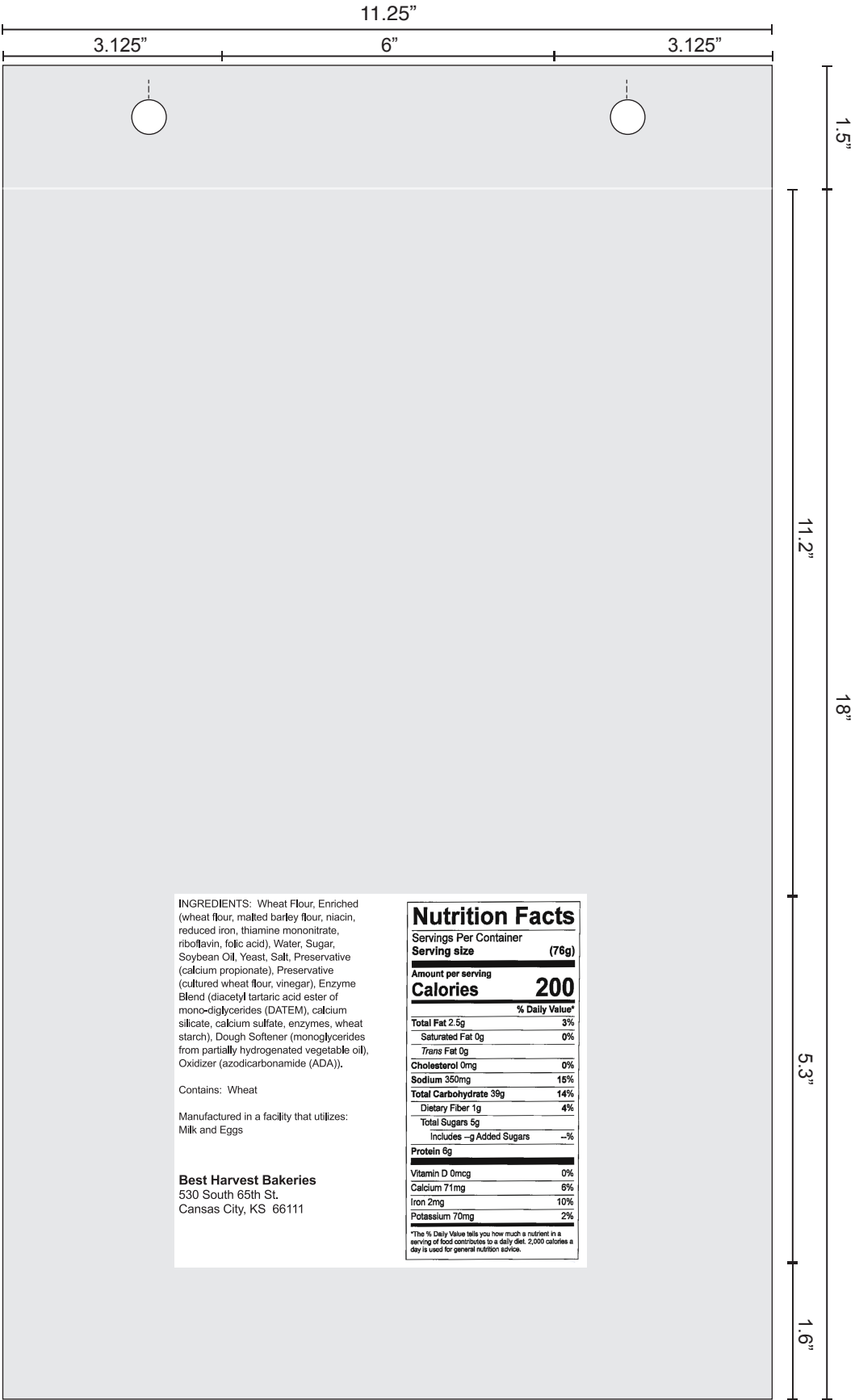
Technical Drawing - MOD7565

11.25" x 18" with 4" BG 2mil Wicketed Bag  
Registered Print; image size: 6.5" x 5.3"  
Film color: Clear; number of ink colors: 3

*This scaled drawing serves as your print proof.*



This scaled drawing serves as your print proof.



This scaled drawing serves as your print proof.

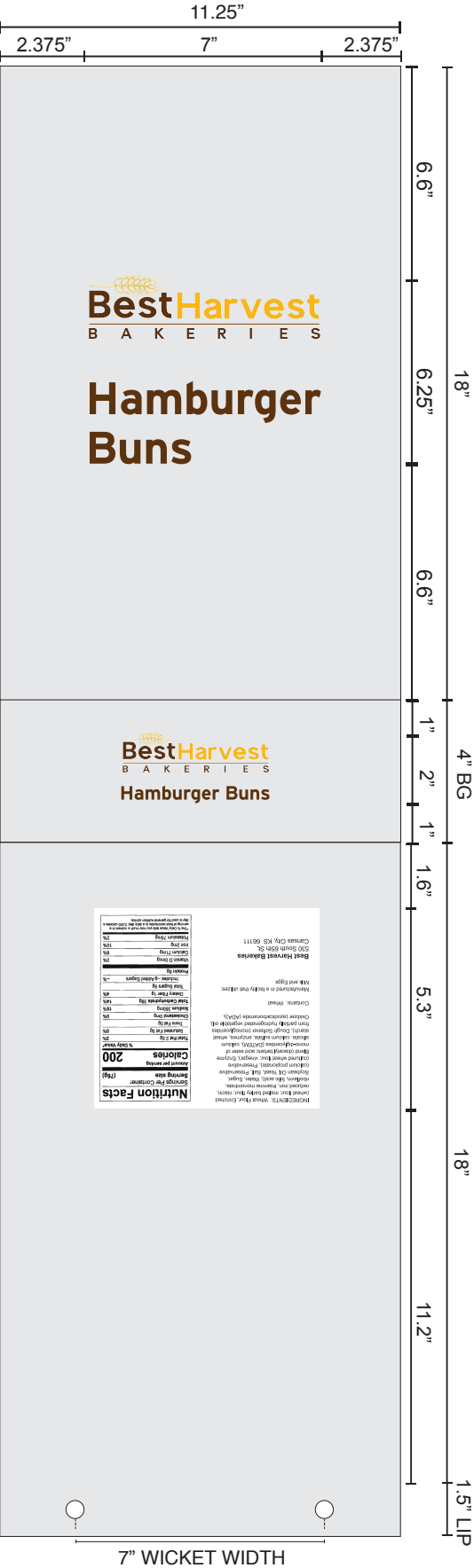
Clear Film

7595

123

WHITE

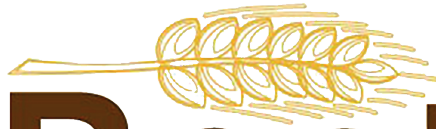
Colors may vary when applied to substrate.







7"



**BestHarvest**

**B A K E R I E S**

**Hamburger  
Buns**

6.25"





6"

INGREDIENTS: Wheat Flour, Enriched (wheat flour, malted barley flour, niacin, reduced iron, thiamine mononitrate, riboflavin, folic acid), Water, Sugar, Soybean Oil, Yeast, Salt, Preservative (calcium propionate), Preservative (cultured wheat flour, vinegar), Enzyme Blend (diacetyl tartaric acid ester of mono-diglycerides (DATEM), calcium silicate, calcium sulfate, enzymes, wheat starch), Dough Softener (monoglycerides from partially hydrogenated vegetable oil), Oxidizer (azodicarbonamide (ADA)).

Contains: Wheat

Manufactured in a facility that utilizes:  
Milk and Eggs

**Best Harvest Bakeries**  
530 South 65th St.  
Cansas City, KS 66111

# Nutrition Facts

Servings Per Container  
Serving size (76g)

Amount per serving  
Calories 200

	% Daily Value*
Total Fat 2.5g	3%
Saturated Fat 0g	0%
Trans Fat 0g	
Cholesterol 0mg	0%
Sodium 350mg	15%
Total Carbohydrate 39g	14%
Dietary Fiber 1g	4%
Total Sugars 5g	
Includes —g Added Sugars	—%
Protein 6g	
Vitamin D 0mcg	0%
Calcium 71mg	6%
Iron 2mg	10%
Potassium 70mg	2%

\*The % Daily Value tells you how much a nutrient in a serving of food contributes to a daily diet. 2,000 calories a day is used for general nutrition advice.

5.3"